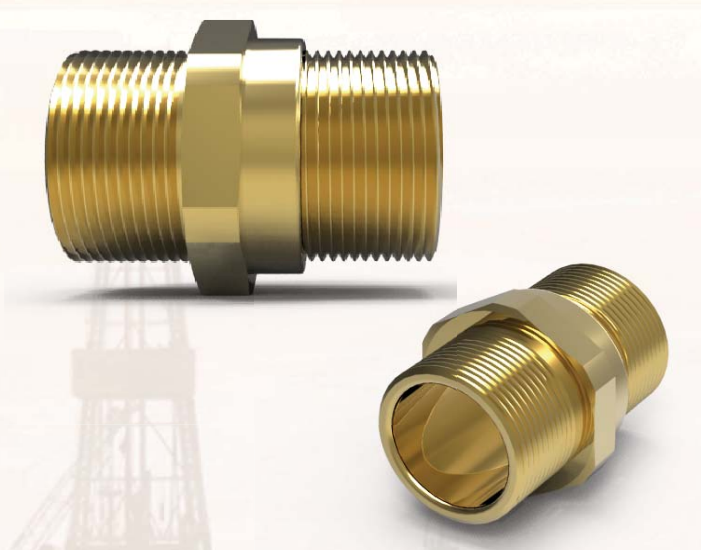


## Flameproof Exd / Increased Safety Exe Dual Certified ATEX / IECEx

### 479 Inline Adaptor (Male to Male)



#### Certification Details

- Increased Safety and Flameproof Exe IIC Gb, Exd IIC Gb, Extb IIIC Db, Ex II 2GD.
- Certificate No's: Baseefa11ATEX0150U and IECEx BAS 11.0072U.
- GOST R certified.
- Operating Temperature Range -60°C to +200°C.
- Group II and III.

#### General Information

- Manufactured in Brass, Nickel Plated Brass, Aluminium, Steel, Nickel Plated Steel and Stainless Steel.
- M16 to M75 as standard.
- Other thread options available on request, including BSPP, PG, NPT, ET and NPSM.
- Suitable for use in Zone 1, Zone 2, Zone 21 and Zone 22.
- Construction and Test Standards: IEC/EN 60079-0, IEC/EN 60079-1 IEC/EN 60079-7 and IEC/EN 60079-31.
- Ingress Protection: IP66.
- Assembly Instruction Sheet: AI 414.

*Note: Different thread sizes and types are permitted at each end of the adaptor, a step of one thread size is permitted between the male threads. Where different thread types / sizes are supplied, the overall dimensions of the adaptor may differ from the ones in the table*

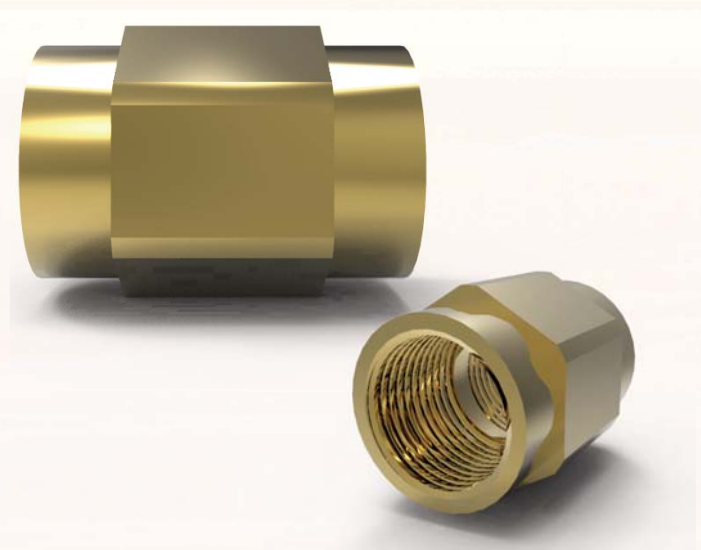
#### SELECTION TABLE

Male Thread Size	Thread Pitch (mm)	Male Thread Size	Thread Pitch (mm)	Thread Length (mm)	Across Flats (mm)	Across Corners (mm)
M16	1.5	M16	1.5	15	24	26.5
M20	1.5	M20	1.5	15	30	32.5
M25	1.5	M25	1.5	15	36	39.5
M32	1.5	M32	1.5	15	46	50.5
M40	1.5	M40	1.5	15	55	60.6
M50	1.5	M50	1.5	15	65	70.8
M63	1.5	M63	1.5	15	80	88.0
M75	1.5	M75	1.5	15	95	109.5

#### Ordering Example:

Product	Thread Size	Material	Finish
479	M32 Male x 1 1/4" NPT Male	Brass	Nickel Plated

### 480 Inline Adaptor (Female to Female)



#### Certification Details

- Increased Safety and Flameproof Exe IIC Gb, Exd IIC Gb, Extb IIIC Db, Ex II 2GD.
- Certificate No's: Baseefa11ATEX0150U and IECEx BAS 11.0072U.
- GOST R certified.
- Operating Temperature Range -60°C to +200°C.
- Group II and III.

#### General Information

- Manufactured in Brass, Nickel Plated Brass, Aluminium, Steel, Nickel Plated Steel and Stainless Steel.
- M16 to M75 as standard.
- Other thread options available on request, including BSPP, PG, NPT, ET and NPSM.
- Suitable for use in Zone 1, Zone 2, Zone 21 and Zone 22.
- Construction and Test Standards: IEC/EN 60079-0, IEC/EN 60079-1 IEC/EN 60079-7 and IEC/EN 60079-31.
- Ingress Protection: IP66.
- Assembly Instruction Sheet: AI 414.

*Note: Different thread sizes and types are permitted at each end of the adaptor, a step of one thread size is permitted between the female threads. Where different thread types / sizes are supplied, the overall dimensions of the adaptor may differ from the ones in the table*

#### SELECTION TABLE

Female Thread Size	Thread Pitch (mm)	Female Thread Size	Thread Pitch (mm)	Thread Length (mm)	Across Flats (mm)	Across Corners (mm)
M16	1.5	M16	1.5	16	24	26.5
M20	1.5	M20	1.5	16	30	32.5
M25	1.5	M25	1.5	16	36	39.5
M32	1.5	M32	1.5	16	46	50.5
M40	1.5	M40	1.5	16	55	60.6
M50	1.5	M50	1.5	16	65	70.8
M63	1.5	M63	1.5	16	80	88.0
M75	1.5	M75	1.5	16	95	109.6

#### Ordering Example:

Product	Thread Size	Material	Finish
479	M32 Female x 1 1/4" NPT Female	Brass	Nickel Plated